

The 2025 Telluride



Movement that inspires



Make a statement, on-road or off.

Bold is a word that captures the spirit of the Telluride. So is *innovative*. And *sophisticated*. No wonder this fully capable SUV is the award-winning choice of North American automobile experts - and families like yours.







Designed and equipped for effortless adventures.

Telluride's spacious, well crafted cabin comes with a wide array of available features designed to make every journey more enjoyable. For the fully engaged driver, there's a 10-inch colour head-up driving information display. And for your relaxation on the ride home, enjoy the note-perfect Harman Kardon Premium Sound system.

¹ Available feature. See features page or visit kia.ca for full details.



Wireless charging³

keeps your compatible smartphone charged while you're on the road.



USB-C charging ports

in every row provide easy access for all passengers to charge their devices.



Digital Key 2 Touch¹

lets you use your smartphone as a secure key, allowing you to lock and unlock the doors and start the engine without the need for a keyfob.



Full display digital rear-view mirror¹

turns the mirror into a digital display with an unobstructed, panoramic view of the rear of the vehicle.



A premium experience for everyone onboard.

With a choice of 7- or 8-passenger configurations, available Nappa leather trim, and available heated and cooled front and 2nd-row seats, Telluride cradles everyone in luxurious comfort. Premium amenities — including LED interior lighting and 2nd-row sunshades — elevate the experience.



One-touch slide and fold 2nd-row seats slide and fold forward to give 3rd-row passengers easy access.



Tri-zone automatic climate control gives driver, front, and rear passengers separate controls to maintain their own personal climate zone.

Versatility for life on the move.

What's an adventure without your gear? Telluride gets you wherever you're going - with everything you want to bring along.



Easy cargo access

for up to 2,455 litres (86.7 cu. ft.) of cargo space with 2nd and 3rd row seats folded.

Smart-power liftgate with Away Close

allows you to set the maximum opening height - and closes automatically when you walk away from the cargo area.

Concealed under-floor storage

provides a hidden storage compartment to organize smaller, lesser-used items.

Safety covered from every angle.

Using advanced sensing and processing technology, the Telluride helps you stay aware of your position on the road, and can even step in and prevent collisions.



Forward collision-avoidance assist with junction crossing^{1,2}

helps detect a potential collision and automatically applies the brakes in a variety of circumstances. The available Junction Crossing feature extends the system's capability to recognize and react to potential cross-traffic collisions.

Blind view monitor^{1,2}

activates within the instrument panel when you apply your turn signal, displaying the blind spot in the direction your turn signal is indicating.

Safe exit assist²

is designed to help prevent rear passengers from exiting the vehicle when the system detects potential hazards approaching. In this case, the system will engage the child locks, plus give an audible and visual alert.

Lane follow assist²

uses a camera at the front windshield to detect lane markers on the road to help keep you in the centre of your lane.

¹ Available feature. See features page or visit kia.ca for full details.

Specifications

Mechanical

Engine type	3.8L V6 GDI
Horsepower	291 hp @ 6,000 rpm
Torque	262 lb.ft. @ 5,200 rpm
Transmission	8-speed automatic
Drive type	All-wheel drive (AWD)
Recommended fuel	Regular unleaded

Measurements

Towing capacity ¹²	X-Pro: 5,500 lbs; all other trims: 5,000 lbs
Fuel tank capacity	71 L
Cargo capacity (behind 1 st row)	2,455 L (86.7 cu. ft.)
Cargo capacity (behind 2 nd row)	1,304 L (46.0 cu. ft.)
Cargo capacity (behind 3 rd row)	601 L (21.2 cu. ft.)

Fuel consumption

City / Highway / Combined (L/100km)	13.1 / 10.0 / 11.7
-------------------------------------	--------------------

Please visit kia.ca for full vehicle specifications.

Wheels



EX
20" alloy wheels with
machine finish



SX / SX Limited
20" alloy wheels with
machine finish

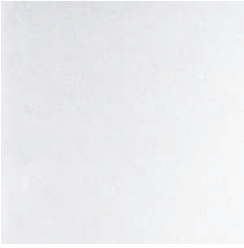


X-Line
20" black
alloy wheels



X-Pro
18" black
alloy wheels

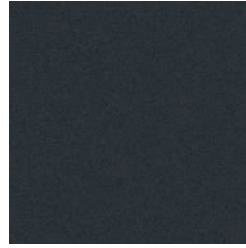
Exterior colours



Glacial White Pearl



Wolf Grey



Panthera Metal Grey



Ebony Black



Midnight Lake Blue



Jungle Green



Dark Moss

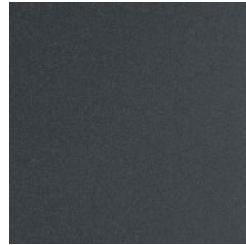
Interior colours



Black leather
(synthetic)



Black leather



Black nappa
leather



Mahogany
nappa leather



Terracotta brown
leather

Some seating, paint and trim configurations may be limited. Visit kia.ca for full details.